

Expona Simplay PUR

PRODUCT SPECIFICATION

Key Features

- > Wood, stone & abstract designs
- > Loose lay planks & tiles in multiple sizes
- > Can be installed over existing floor coverings
- > Non-skid honeycomb backing
- > Heavy commercial applications & residential



Product Format	Standard	Result
Gauge	ISO 24346 (EN 428)	5.0mm
Wear Layer	ISO 24340 (EN 429)	0.70mm
Total Weight	ISO 23997 (EN 430)	8000g/m ²
Finish		PUR

Plank & Tile Sizes	Size	Shades	Quantity per Box	Coverage per Box/Roll
Plank	177.8mm x 1219.2mm	17	10	2.17m ²
	185mm x 1505mm	8	8	2.23m ²
Tile	177.8mm x 1219.2mm	4	10	2.17m ²
	304.8mm x 609.6mm	2	10	1.86m ²
	600mm x 600mm	6	6	2.16m ²
	914.4mm x 914.4mm	3	4	3.34m ²

Performance Requirements	Standard	Result
General Performance	ISO 10582 (EN 649) ASTM F1700	Conforms Class III Type A+B
Use Area	ISO 10874 (EN 685)	23, 34, 43
Slip Resistance	EN 13893 DIN 51130 / DIN EN 16165 Ann. B AS 4586 ASTM D2047	Class DS R10 R10 SCOF ≥0.5
Binder Content	ISO 10582	Type I
Abrasion Resistance	EN 649	Group T
Reaction to Fire	EN 13501-1 ASTM E662 ASTM E648 CAN/ULC S102.2	Class Bfl-S1 <450 Pass Class 1 FSV < 300; SDV < 500
Static Electrical Propensity	EN 1815	≤2.0kV Classified as 'antistatic'

Residual Indentation	ISO 24343-1 ASTM F970 ASTM F1914	≤0.10mm* ≤0.005" @ 750psi ≤0.005"
Castor Chair (continuous use)	ISO 4918 (EN 425)	Suitable
Dimensional Stability	ISO 23999 (EN 434) ASTM F2199	≤0.10% Pass
Flexibility	ASTM F137	1" - Pass
Underfloor Heating		Suitable, max 27°C
Light Fastness	ISO 105-B02 (Method 3)	≥6
Resistance to Light	ASTM F1515	ΔE ≤ 8.0 - Meets
Resistance to Heat	ASTM F1514	ΔE ≤ 8.0 - Meets

*Average test value from current production.

Sustainability	Standard	Result
BRE Green Guide		A+ Generic
Specific EN 15804 EPD		Available
Recyclable & Reusable		100%
Recycled Content		20%
REACH		Compliant
Indoor Air Comfort Gold		Eurofins certified product
FloorScore		Certified
Finnish M1 Classification		Meets requirements
AgBB/ABG		Pass

Acoustic Performance	Standard	Result
Impact Sound Reduction	ISO 10140-3	8dB
Sound Transmission Coefficient	ASTM E90/492	STC 55
Impact Insulation Class	ASTM E90/492	IIC 46

Maintenance Performance	Standard	Result
Resistance to Chemicals	ISO 26987 (EN 423) ASTM F925	Good resistance Good resistance

Regular light maintenance is more cost-effective than periodic heavy maintenance and more beneficial to the floor covering.



Polyflor Ltd. Head Office

PO Box 3, Radcliffe New Road, Whitefield, Manchester, M45 7NR • Tel: +44 (0) 161 767 1111 • Email: info@polyflor.com • www.polyflor.com

© At the time of writing and publication of sheet, all the information is specified correctly. The company reserves the right to change the specifications of this product at any time without prior notice to third parties.

Expona Simplay PUR



RANGE SHADES

177.8mm x 1219.2mm

7" x 48"



White Ash **2574**

LRV 56



Natural Ash **2511**

LRV 22



White Rustic Pine **2513**

LRV 41



Brown Wild Oak **2570**

LRV 12



Natural Wild Oak **2571**

LRV 35



Rich Walnut **2504**

LRV 6



Grey Country Oak **2506**

LRV 40



Dark Country Oak **2505**

LRV 11



Natural Rustic Pine **2514**

LRV 22



Grey Ash **2512**

LRV 28



Honey Wild Oak **2572**

LRV 26



Light Grey Finline **2509**

LRV 23



Blond Country Oak **2507**

LRV 36



Dark Grey Finline **2510**

LRV 12



American Oak **2503**

LRV 34



Black Ash **2573**

LRV 7



Light Cherry **2501**

LRV 26

185mm x 1505mm
7.25" x 59.25"



White Vintage Wood **2577**

  LRV 50



Beige Vintage Wood **2578**

  LRV 40



Natural Weathered Wood **2575**

  LRV 34



Light Classic Oak **2520**

 LRV 20



Medium Classic Oak **2521**

 LRV 20



Brown Mystique Wood **2519**

  LRV 9



Grey Weathered Wood **2576**

  LRV 25



Grey Mystique Wood **2518**

  LRV 16

Expona Simplay PUR

914.4mm x 914.4mm
36" x 36"




Beige Mono **2580** 
LRV 46




Light Mono **2579** 
LRV 51




Charcoal Mono **2581** 
LRV 9

600mm x 600mm
23.6" x 23.6"




Light Grey Concrete **2567** 
LRV 34




Warm Grey Concrete **2568** 
LRV 23




Cold Grey Concrete **2566** 
LRV 18




Dark Grey Concrete **2569** 
LRV 13




Light Grey Ornamental **2586** 
LRV 33

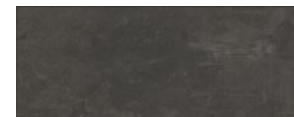



Dark Grey Ornamental **2587** 
LRV 13

304.8mm x 609.6mm
12" x 24"



Light Marble **2583** 
LRV 50



Black Slate **2582** 
LRV 9

177.8mm x 1219.2mm
7" x 48"



Cold Cracked Concrete **2585**
LRV 37



Warm Cracked Concrete **2584**
LRV 34



Blue Textile **2589**
LRV 22



Taupe Textile **2588**
LRV 22



LRV - Light Reflectance Value

 Bevelled Edges

 Colour/Pattern Variation

Polyflor Ltd. Head Office

PO Box 3, Radcliffe New Road, Whitefield, Manchester, M45 7NR • Tel: +44 (0) 161 767 1111 • Email: info@polyflor.com • www.polyflor.com

© At the time of writing and publication of sheet, all the information is specified correctly. The company reserves the right to change the specifications of this product at any time without prior notice to third parties.